

# Paul Fletcher & Sons, Inc.

Licensed & Bonded  
Water Well Drilling  
Pump Installations and Service

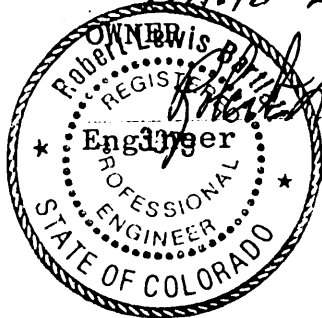
Phone  
481-3589  
481-2093

Route 1 Highway 105  
Palmer Lake, Colorado 80133

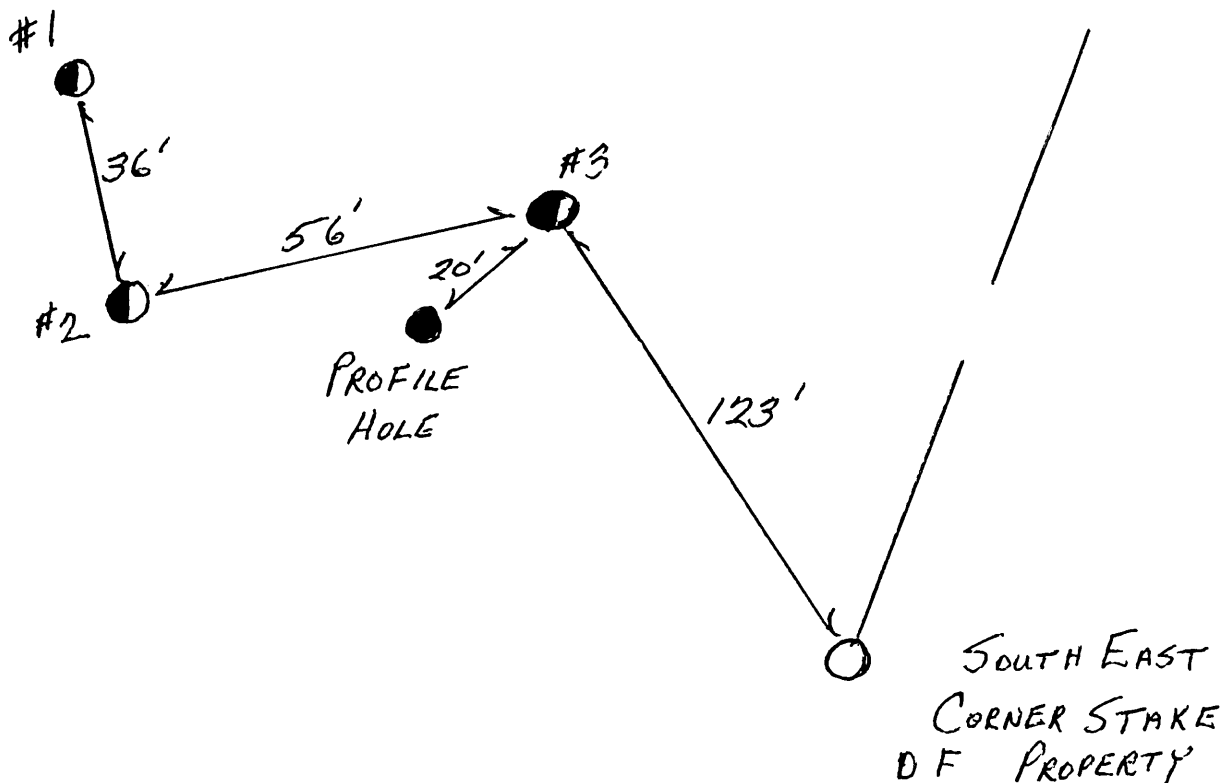
DAVID ECKLAND

LOT 19, BRIDLE BIT RANCH  
LOCATION

3/31/82  
DATE OF TEST



*Robert P. Fletcher*



Thomas Fletcher  
OBSERVER

### PROFILE HOLE

0-3" TOP SOIL

59"-97" SAND w/ MODERATE GRAY CLAY

3"-18" TAN CLAY w/ SAND & GRAVEL

18"-24" SAND & GRAVEL w/ MODERATE TAN CLAY

27"-38" SAND & GRAVEL w/ TRACE TAN CLAY

38"-59" SANDY TAN CLAY

Test hole number 1 Depth to bottom of hole 34" Diameter of hole 6"

Time	Time Interval, minutes	Measurements, inches	Drop in water level, inches	Percolation rate, minutes per inch	Remarks
7:03		26			
7:13	10	31 <sup>1</sup> / <sub>16</sub>	5 <sup>1</sup> / <sub>16</sub>		
7:14		25 <sup>15</sup> / <sub>16</sub>			
7:24	10	29 <sup>1</sup> / <sub>2</sub>	3 <sup>9</sup> / <sub>16</sub>		
7:25		25 <sup>15</sup> / <sub>16</sub>			
7:35	10	28 <sup>7</sup> / <sub>16</sub>	2 <sup>1</sup> / <sub>2</sub>		
7:36		26 <sup>1</sup> / <sub>16</sub>			
7:46	10	27 <sup>15</sup> / <sub>16</sub>	1 <sup>7</sup> / <sub>8</sub>		
7:48		26			
7:58	10	26 <sup>13</sup> / <sub>16</sub>	1 <sup>13</sup> / <sub>16</sub>		
Percolation rate = 5.52 minutes per inch					

Test hole number 2 Depth to bottom of hole 32" Diameter of hole 6"

Time	Time Interval, minutes	Measurements, inches	Drop in water level, inches	Percolation rate, minutes per inch	Remarks
7:06		24 <sup>1</sup> / <sub>8</sub>			
7:16	10	24 <sup>3</sup> / <sub>4</sub>	5 <sup>1</sup> / <sub>8</sub>		
7:17		24			
7:27	10	24 <sup>3</sup> / <sub>8</sub>	3 <sup>1</sup> / <sub>8</sub>		
7:28		24			
7:38	10	24 <sup>5</sup> / <sub>16</sub>	5 <sup>1</sup> / <sub>16</sub>		
Percolation rate = 32 minutes per inch					

Test hole number 3 Depth to bottom of hole 32" Diameter of hole 6"

Time	Time Interval, minutes	Measurements, inches	Drop in water level, inches	Percolation rate, minutes per inch	Remarks
7:09		24			
7:19	10	27 <sup>1</sup> / <sub>4</sub>	3 <sup>1</sup> / <sub>4</sub>		
7:20		24			
7:30	10	26 <sup>5</sup> / <sub>16</sub>	2 <sup>5</sup> / <sub>16</sub>		
7:31		24			
7:41	10	26	2		
7:42		23 <sup>15</sup> / <sub>16</sub>			
7:52	10	25 <sup>7</sup> / <sub>8</sub>	1 <sup>15</sup> / <sub>16</sub>		
Percolation rate = 5.16 minutes per inch					

AVERAGE RATE: 14.23 MIN./INCH