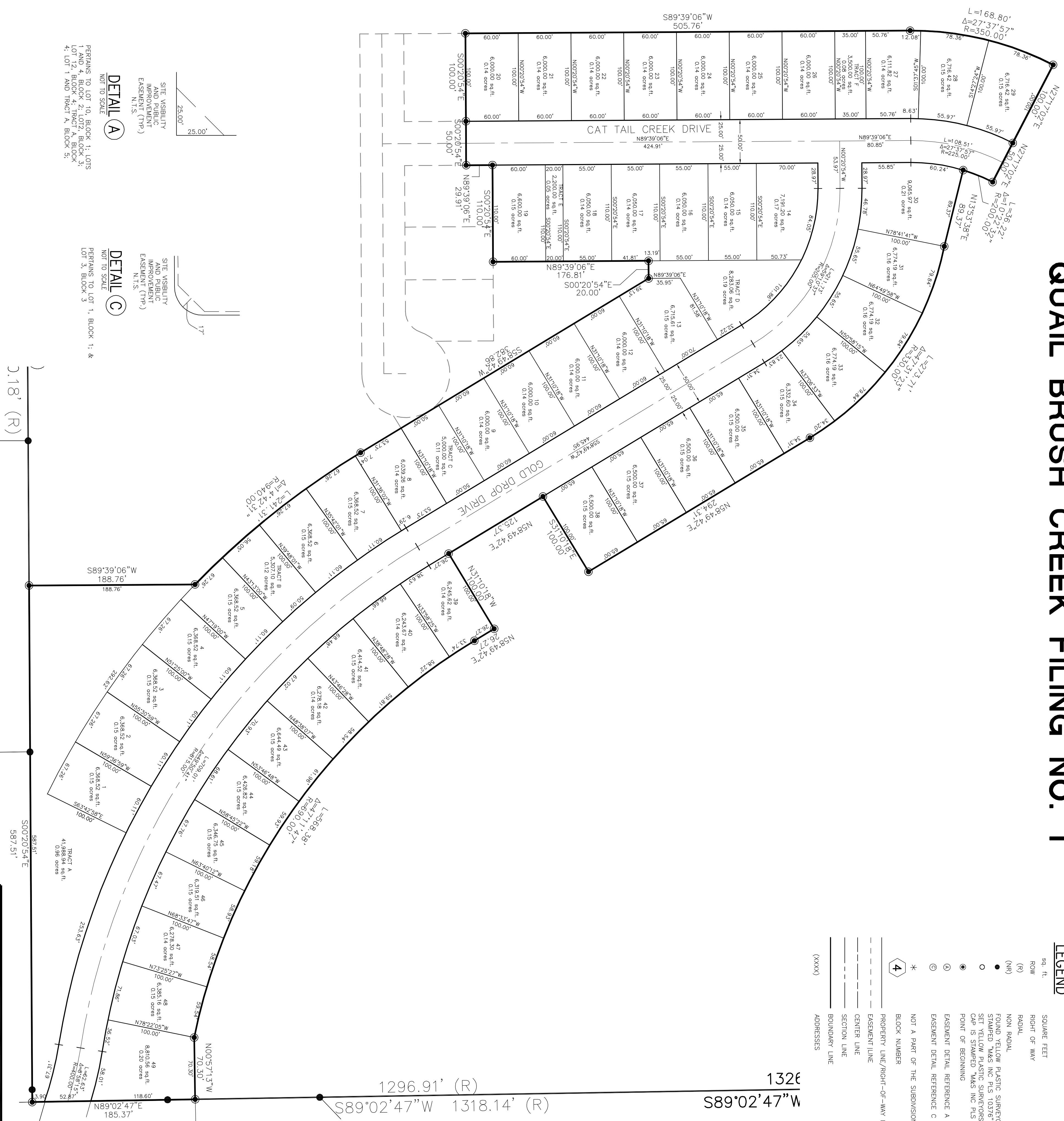


QUAIL BRUSH CREEK FILING NO. 1

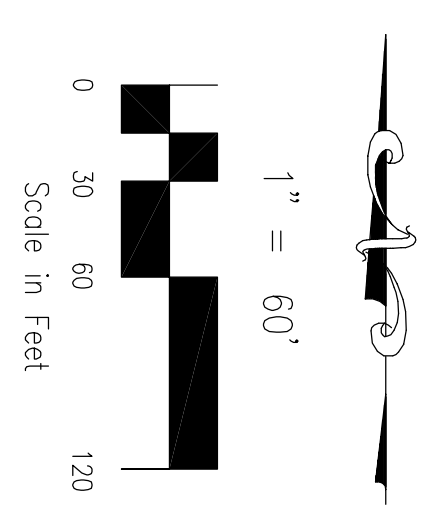


LEGEND

- sq. ft.
- ROW
- RIGHT OF HWY
- (R)
- NON RADIAL
- FOUND YELLOW PLASTIC SURVEYORS CAP ON NO. 4 REBAR. SET YELLOW PLASTIC SURVEYORS CAP ON NO. 4 REBAR. SET 5' FROM CURB AS IND. PLS 10378
- POINT OF BEGINNING
- ⊙ EASEMENT DETAIL REFERENCE A
- ⊙ EASEMENT DETAIL REFERENCE C
- * NOT A PART OF THE SUBDIVISION
- 4 BLOCK NUMBER
- PROPERTY LINE/RIGHT-OF-HWAY LINE
- EASEMENT LINE
- CENTER LINE
- SECTION LINE
- BOUNDARY LINE
- (XXXX) ADDRESSES

CURVE TABLE

CURVE	LENGTH	RADIUS	DELTA
C1	31.47'	100.00'	180°15'6"
C2	24.67'	72.00'	183°58'02"
C3	49.03'	100.00'	285°53'37"
C4	48.47'	100.00'	274°42'23"
C5	52.14'	100.00'	225°32'26"
C6	17.87'	100.00'	183°44'44"
C7	21.25'	72.00'	183°44'44"
C8	18.68'	50.00'	92°54'43"
C9	69.38'	40.00'	92°54'43"
C10	24.67'	72.00'	183°58'02"
C11	29.07'	100.00'	183°58'02"
C12	48.47'	100.00'	274°42'23"
C13	48.47'	100.00'	274°42'23"
C14	50.09'	100.00'	281°46'23"
C15	17.88'	72.00'	183°44'44"
C16	62.63'	40.00'	92°54'43"
C17	26.27'	180.00'	82°14'48"
C18	28.51'	205.00'	79°27'01"
C19	53.54'	205.00'	81°19'38"
C20	53.54'	205.00'	81°19'38"
C21	172.28'	530.00'	183°37'26"
C22	180.40'	555.00'	183°37'26"
C23	412.94'	845.00'	192°18'00"
C24	286.60'	845.00'	192°18'00"
C25	121.02'	845.00'	081°27'21"
C26	245.38'	870.00'	167°09'37"
C27	400.73'	820.00'	287°00'00"



GW CONSULTANTS, INC.
102 E. HILLS BLVD. STE. 306
COURTWOOD SPRINGS, CO 80903
(719) 955-5463, FAX (719) 444-8427

QUAIL BRUSH CREEK FILING NO. 1

FINAL PLAT

PROJECT NO. 08-019	SCALE	DATE: 10-10-12
DESIGNED BY: GW	HORIZ: 1"=60'	
DRAWN BY: GW	CHECKED BY: WAS	VERT: N/A
		SHEET 2 OF 2
		P2